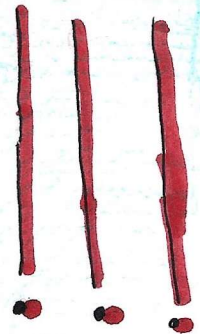
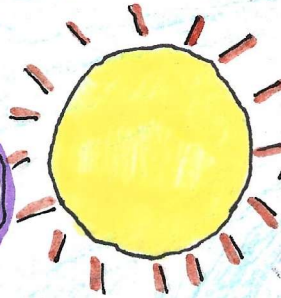


GARVALDO

HORTICULTURAL SOCIETY

72ND



ANNUAL

23rd OF AUGUST 2025

VILLAGE SHOW



Garvald Horticultural Society

Hon President, Dr John Sheldon

Office Bearers

President, Malcolm MacMillan, Whitelaws, Garvald (01620 830351)

Show Secretary, Phillip White

Treasurer, Dave Gilmour

Members of Committee

Chiara Brand, Elizabeth Jack, Caroline McGregor, Elaine MacMillan, Sofia Picken, Fiona Sheldon, Chiara Vaccaro.

Show Timetable

Friday 22nd August

Staging	7:00-9:00pm
---------	-------------

Saturday 23rd August

Staging	8:00-10:00am
Doors open	2:00pm
Teas and tombola	2:15-3:30pm
Pet show	3:00pm
Presentation of trophies	3.45pm
Sale of produce	4:00pm
Show closes	4:00pm

Are you a grower, maker, baker? If you have ideas for categories for next year's show please let a member of the committee know.

It's your show, so let us know!

MEMBERSHIP

- The membership fee is £2 and carries with it free admission to the show and entry to all classes. Membership is payable at staging to the Show Secretary.
- Exhibition entry to be confined to paid up members, but under 18s and Display items (non-competitive) free.

ADMISSION TO SHOW

- Members - FREE.
- Non-members by DONATION.

SHOW REGULATIONS

- 1 Entries will be accepted on the morning of the show.
- 2 Competitors are permitted **only one exhibit in each class entered**.
- 3 No wiring of cut flowers allowed unless otherwise specified.
- 4 Pot plants must be in the hands of competitors for at least three months and other horticultural exhibits at least six weeks immediately prior to the show. Every exhibit must be their bona fide property otherwise they will forfeit all their prize money and membership. The Committee is empowered to visit the garden of intending competitors at any time prior to the Show.
- 5 All prizes will be awarded according to quality unless otherwise specified. The judges may award a prize or prizes to articles of outstanding merit. The judges' decision will in all cases be final.
- 6 Except for children, the amount of prize money that any one competitor may receive will be limited to £10 and any prize money gained in excess of this sum will go to the funds of the Society.
- 7 All exhibits must be staged in the Show Room between the hours of Friday 7:00-9:00pm and Saturday 8:00-10:00am without fail, and no exhibit will be received thereafter.
- 8 All competitors (except office bearers and committee) will be excluded from the Show Room during the judging.
- 9 Exhibits must not be removed before the close of the show at 4:00pm.
- 10 The prize money will be paid to successful competitors at 4:00pm on the show day. Uncollected monies will go into show funds.
- 11 Complaints must be made in writing when they arise and lodged with the President.
- 12 All trophies will be held for one year.
- 13 The A.G.M. will be held in November 2025. All members will be most welcome.

Please ensure that your membership number is on each staging card

- Prize money for each class: 1st Prize-£1.50 2nd Prize-£1 3rd Prize-75p

HANDICRAFTS

All items to be made during the previous 12 months.

- | | |
|----|--|
| A1 | A hand-knitted cardigan |
| A2 | A crocheted hat |
| A3 | A sewn item for wearing |
| A4 | A piece of quilting |
| A5 | A woven item (basketry) |
| A6 | A watercolour painting inspired by nature |
| A7 | A small bag (unlined: pencil case, make-up etc.) |

PRESERVES & BAKING

All preserves must be in clear glass jars. Jars are to be filled to the brim and sealed to prevent contamination.

- | | |
|-----|---|
| A8 | Jar of chutney |
| A9 | Jar of lemon curd |
| A10 | Jar of fruit jelly |
| A11 | Jar of raspberry jam |
| A12 | Jar of strawberry jam |
| A13 | Jar of jam made with any other fruit |
| A14 | Jar of marmalade |
| A15 | Jar of honey |
| A16 | 4 decorated cupcakes - colourful |
| A17 | 4 fruit scones |
| A18 | 4 single meringues (no cream) |
| A19 | 4 pieces of rocky road tray bake |
| A20 | 4 pieces of tablet |
| A21 | 4 pieces of shortbread |
| A22 | A loaf of bread |
| A23 | A speciality bread |
| A24 | A Victoria sponge (with buttercream) |
| A25 | A carrot cake |
| A26 | A savoury tart of your choice: shortcrust |
| A27 | A fruit loaf |

- Prize money for each class: 1st Prize-£1.50 2nd Prize-£1 3rd Prize-75p

PHOTOGRAPHY

All photographs must be printed no larger than A5 (21cm x 15cm), unmounted, with or without a border.

- C1 Bright lights, big city
- C2 Mountains, climbing or scrambling
- C3 River or stream
- C4 Lights, camera, action – an action shot
- C5 The art in machinery and tools
- C6 Close up of an insect on a plant
- C7 A discussion
- C8 Music
- C9 Ingredients for a party

FLOWER ARRANGING

- D1 Jug of flowers for the kitchen table
- D2 A hand-tied posy
- D3 A natural, textured display including foliage
- D4 An arrangement of flowers of up to three colours
- D5 A buttonhole

Please ensure that your membership number is on each staging card

- Prize money for each class: 1st Prize-£1.50 2nd Prize-£1 3rd Prize-75p

PLANTS

E1	1 fuchsia
E2	1 pelargonium, geranium
E3	Flowering plant other than above
E4	1 fern
E5	1 foliage plant
E6	1 cactus or succulent
E7	1 orchid

CUT FLOWERS

E8	1 vase asters, 4 blooms
E9	1 vase H.T. roses, 3 blooms
E10	1 vase H.T. roses, 1 bloom
E11	1 vase floribunda roses, 1 stem
E12	1 vase roses, mixed, min. 4 stems
E13	1 vase shrub roses, 4 stems
E14	1 vase annuals, 1 kind
E15	2 vases annuals, 2 distinct kinds
E16	1 vase annuals, 3 distinct kinds
E17	1 vase gladioli, 3 spikes
E18	1 vase gladioli, 1 spike
E19	1 vase cactus dahlias, 3 blooms
E20	1 vase decorative dahlias, 3 blooms
E21	1 vase pom-pom dahlias, 5 blooms
E22	1 vase French marigolds, 6 blooms
E23	1 vase African marigolds, 4 blooms
E24	1 vase phlox, 3 spikes
E25	2 vases flowers from open border
E26	1 vase herbaceous, 2 distinct kinds
E27	1 vase mixed herbaceous
E28	2 vases sweet peas, 7 spikes in each, 1 variety in each vase
E29	1 vase sweet peas, 9 spikes
E30	1 vase mixed shrubs-foliage
E31	1 vase 4 mixed flowering shrubs
E32	1 vase 1 flowering shrub, 3 stems
E33	1 vase sunflowers, 3 stems
E34	6 fuchsia heads on board

Please ensure that your membership number is on each staging card

- Prize money for each class: 1st Prize-£1.50 2nd Prize-£1 3rd Prize-75p

VEGETABLES

F1	6 pods broad beans
F2	4 runner beans
F3	6 french beans
F4	6 pods peas
F5	6 tomatoes, cherry variety
F6	4 tomatoes
F7	2 turnips
F8	2 beetroot
F9	2 carrots
F10	2 parsnips
F11	4 onions, grown from setts
F12	4 onions, grown from seed
F13	4 onions, red
F14	Heaviest marrow
F15	6 shallots, yellow or red
F16	4 potatoes, named-coloured
F17	4 potatoes, named-white
F18	Collection of potatoes 3 varieties, 3 of each
F19	2 leeks
F20	1 marrow, quality
F21	1 cabbage
F22	1 cauliflower
F23	1 lettuce
F24	3 courgettes
F25	3 stalks rhubarb
F26	1 vase mixed herbs
F27	Exhibit of any veg not already in schedule
F28	Best collection of veg three kinds, 2 of each
F29	Basket of vegetables for kitchen use (not exceeding 400mm in any direction, no herbs or fruit)

FRUIT

F31	3 dessert apples
F32	3 kitchen apples
F33	4 plums
F34	Exhibit of fruit, other than above

Please ensure that your membership number is on each staging card

Prize money for each class: 1st Prize-£1.50 2nd Prize-£1 3rd Prize-75p

- Age must be on the back of the staging card
- All work must be the competitor's own efforts (adult supervision may be required).
- If you'd like to work with a friend, please enter under the Display section.
- Staging is allowed only until 10:00am prompt

UNDER 5 YEARS OLD

- | | |
|----|---|
| G1 | A pasta necklace |
| G2 | A nature collage using leaves, feathers, wool etc. found locally |
| G3 | A bunch of flowers in a jam jar |
| G4 | 5 tiny things (non-living!) found at the beach, arranged on a plate |
| G5 | Grow your own: 'cress head' in an egg shell** |

AGE 5 TO 8 YEARS

- | | |
|----|--|
| H1 | 4 cheese scones |
| H2 | 3 painted pebbles |
| H3 | A finger-print painting of a butterfly or bee |
| H4 | A model alien made out of vegetables |
| H5 | A drawing of my family |
| H6 | Grow your own: tattie – judged by size and weight* |

AGE 9 TO 12 YEARS

- | | |
|----|---|
| J1 | 4 decorated cup cakes |
| J2 | A miniature garden in a shoebox |
| J3 | A lego model (no kits) |
| J4 | A bracelet using beads or woven (friendship bracelet) |
| J5 | Design the front cover for Garvald Village Show schedule 2025 (size A5): must include the wording: <i>Garvald Horticultural Society 73rd Annual Village Show 22nd August 2026</i> |
| J6 | Grow your own: tattie – judged by size and weight* |

**seed potatoes to be provided with instructions in April (please use the variety provided).*

*** cress seeds will be provided in August*

Please ensure that your membership number is on each staging card

PET SHOW

- Open to all
- The Pet Show will be held in the orchard outside the Village Hall at 3pm
- Entries will be received from 2:45pm
- All entries must be under firm control
- Rosettes will be awarded in the following categories:

- 1 Friendliest pet
- 2 Best behaved pet
- 3 Best groomed pet
- 4 The best dressed pet
- 5 Most knowledgeable handler
- 6 Best pet in show

DISPLAY

These categories are non-competitive:

- 1 “Perfectly imperfect” vegetable
- 2 “Foraged”
- 3 “Anything goes” Why not bring along something you have made, baked or grown for the new display table?
- 4 **Children’s Team entries** – work with friend to make an article of your choice. Local schools and clubs are welcome to display produce under this item.

BASIC TIPS FOR SHOWING

Flowers

Should be as fresh as possible

Avoid using dead flowers, foliage with insect damage and soil splashes

Follow the schedule – correct number of stems etc.

Vegetables

Should be as fresh as possible

Try to get even sized specimens if possible

Try to get blemish free if possible

Wash to remove soil

Smaller items best displayed on paper plates

Fruit

Should be as fresh as possible

Try to get even sized specimens if possible

Try to get blemish free if possible

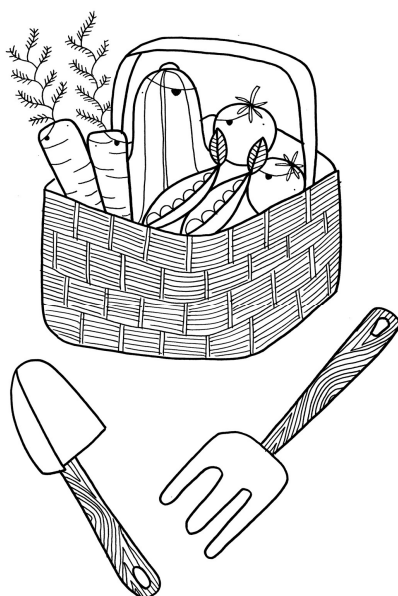
Stalks intact on apples and pears

Preserves

All preserves must be in clear glass jars

Jars are to be filled to the brim and sealed to prevent contamination

Avoid labelling in such a way that identifies entrant



SPECIAL AWARDS

INDUSTRIAL A1-A27	<u>GHS Industrial Trophy</u> for the most points
HANDICRAFTS A1-A7	<u>GHS Ladies Challenge Trophy</u> for the most outstanding exhibit
PRESERVES & BAKING A8-A27	<u>GHS Cookery Challenge Cup</u> for most outstanding exhibit
PHOTOGRAPHY C1-C9	<u>Sancta Maria Abbey Cup</u> for best photograph
FLORAL ART D1-D5	<u>Cameron Cup</u> for the most outstanding exhibit
FLORAL ART D1-D5	<u>Floral Art Trophy</u> for the most points
CUT FLOWERS E9-E10	<u>J.K.Webster Rose Shield</u> for the best HT Roses
CUT FLOWERS E17-E18	<u>James Hardie Cup</u> for the best Gladioli
CUT FLOWERS E28-E29	<u>Smithy Shield</u> for the best Sweet Peas
VEGETABLES F8	<u>J.K Webster Shield</u> for the best Beetroot
VEGETABLES F29	<u>Cardinal Gordon Gray Salver</u> for the best Basket of Vegetables
VEGETABLES & FRUIT F1-F28 and F31-F34	<u>GHS Challenge Trophy</u> for the most outstanding exhibit (i.e. excluding class F29)
PRE SCHOOL CHILDREN G1-G5	<u>Village Show Trophy</u> for the most outstanding exhibit
PRE SCHOOL CHILDREN G1-G5	<u>Village Show Cup</u> for the most points
AGE 5 TO 8 YEARS H1-H6	<u>Bett Pratt Memorial Quaich</u> for the most outstanding exhibit
AGE 5 TO 8 YEARS H1-H6	<u>Garvald and Morham Community Council Cup</u> for most points
AGE 9 TO 12 YEARS J1-J6	<u>Alice Lawrie Trophy</u> for the most outstanding exhibit
AGE 9 TO 12 YEARS J1-J6	<u>Tanderlane Cup</u> for the most points

- Audrey Mae Traynor Cup for the best hand-knitted exhibit
- GHS Salver for the most points in the show

DONATIONS TO THE SHOW FUND
WILL BE MOST WELCOME

THE CONTRIBUTION OF
PRIZES FOR THE TOMBOLA
WILL ALSO BE GRATEFULLY ACCEPTED

GARVALD VILLAGE HALL IS AVAILABLE FOR HIRE

**FOR DETAILS OF FACILITIES AND PRICES
PLEASE VISIT:**

www.garvald.org.uk

Winning cover design by Flora Jones